

Castles

ASSEMBLY INSTRUCTIONS for PO294 Castle Hall



PLEASE - PAY ATTENTION
Read through the instructions and familiarise yourself with the kit components before you start any building.
You must follow these step by step instructions carefully to make this wonderfully detailed kit.

1 Tools to build this kit.

- To build this kit you will need a few basic tools:
1. A modellers knife.
 2. A cutting surface - A cutting mat or a sheet of thick card will do.
 3. A sharp pair of scissors
 4. A steel ruler.
 5. Fine point tweezers.
 6. METCALFE Ultra Fine Tip Glue Bottles (see 3)

2 Glue.

We recommend using a combination of two types of glue: **Speed Bond** and **Rocket Card Glue**. Both are made by Deluxe Materials - www.deluxematerials.com

Rocket Card Glue is an instant and fast drying glue, great for where you need stuff to stay just where you place it. Supplied with its own fine tip applicator. **Speed Bond** is slightly slower drying, ideal for where a little positioning is required as you build.



3 Ultra Fine Tip Glue Applicators.

An absolute 'must' when building this kit. When used with Speed Bond perfect amounts of glue can be applied to very precise areas without any mess.



Speed Bond in an applicator was used to build most of this kit.

A METCALFE product supplied in packs of 3
Product code MT907
Glue not included

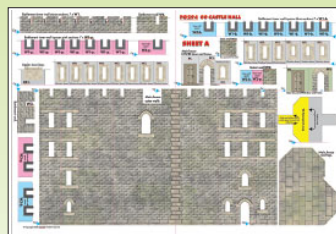


4 Extracting components from base sheets.

To stop the components falling off the base sheets, they are held secure with score lines (marked with blue arrows) that cut about 75% of the way through the card. To release them run the point of your knife along these score lines and they will come seamlessly away. **WARNING**, Cut with care to reduce the risk of the blade running out of the score and cutting the component.

5 Kit components.

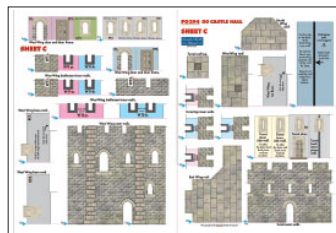
This kit should contain:



SHEET A.
Printed sheet with Main House walls etc.



SHEET B.
Printed sheet with walls and other parts for the East and North wings.



SHEET C.
Printed sheet with walls and other parts for the West wing and the Turret.

GREY CARD SHEET D.

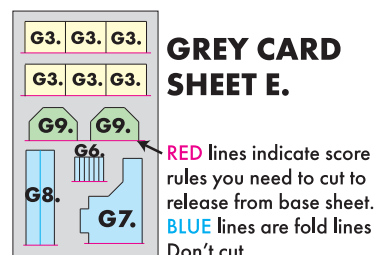
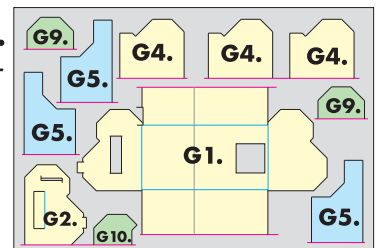
Thick card components for strengthening the interior of your building.

Key to Grey Card Components:

- MAIN HOUSE**
G1. Inner frame.
G2. Upper base card.
G3. Inner floor supports x 6.
G4. Inner floors x 3.

- EAST WING**
G5. Base cards x 3.
G6. Bay inner side strips x 6.
G7. Roof base card.
G8. Wall end strengthener.

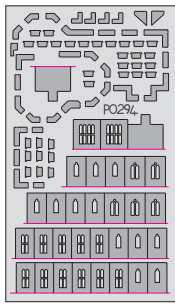
- NORTH WING**
G9. 3 x Base cards and 1 x roof base card (the same).
G10. Inner mid floor.



GREY CARD SHEET E.

RED lines indicate score rules you need to cut to release from base sheet.
BLUE lines are fold lines Don't cut

More components overleaf.



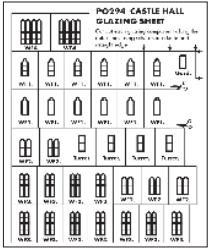
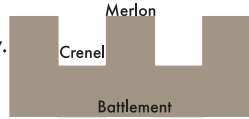
LASER CUT SHEET L1.

On this sheet are the very tiny laser cut parts that make this kit look so good. There are:

- Window inner frames.
 - x 11.
 - x 5.
 - x 11.
 - x 2.
- Garderoobe brackets. x 2.
- Crenel stones. x 30
- Jig for assembling battlement walls x 2.

Plus x 31 different shaped Merlon top stones.

The merlon top stones are laid out on the sheet in the same order as the plan below. Only remove them one at a time as you attach them to your walls.

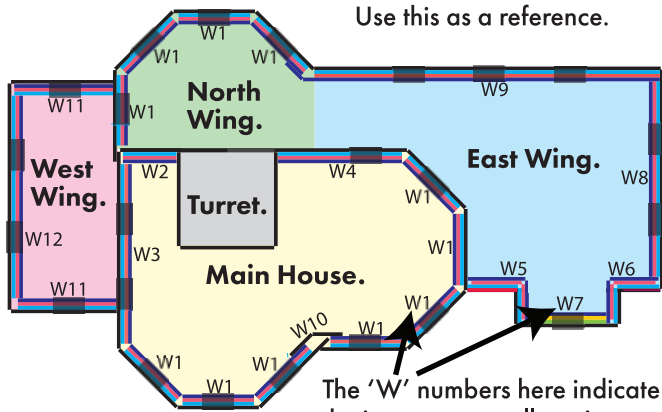


GLAZING SHEET.

A sheet of clear plastic printed with window frame detailing. Cut out each one and store in a safe place until needed.

6 Plan of Castle Hall.

Use this as a reference.

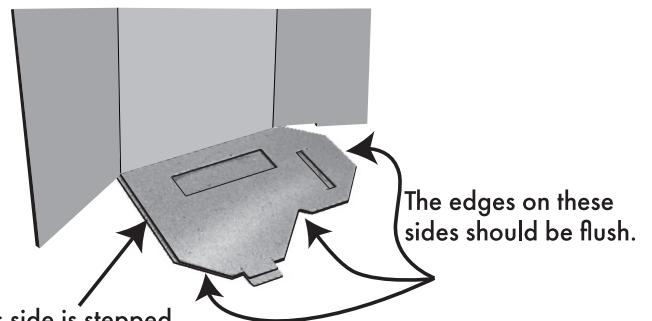
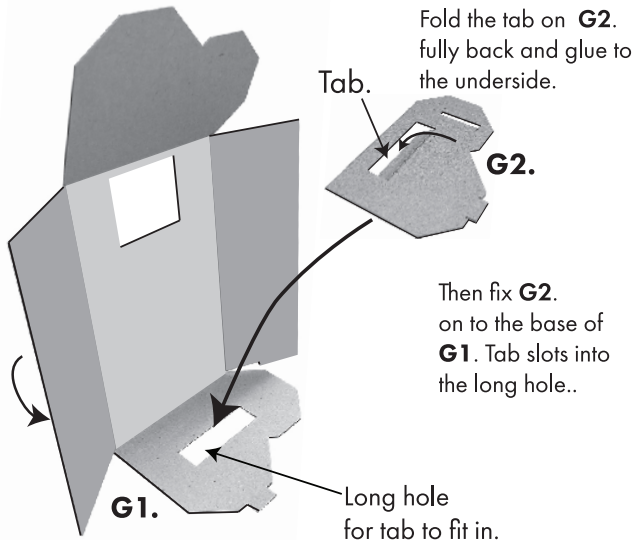


The 'W' numbers here indicate the inner turret wall sections.

7 Lets get building.

We will start with the Main House. The walls of the main house wrap around an inner frame. Build the Inner Frame First.

From the Grey Card Sheets D & E. extract the following: **G1.** Inner frame and **G2.** Upper base card.



This side is stepped to allow the side wall to sit in the recess.

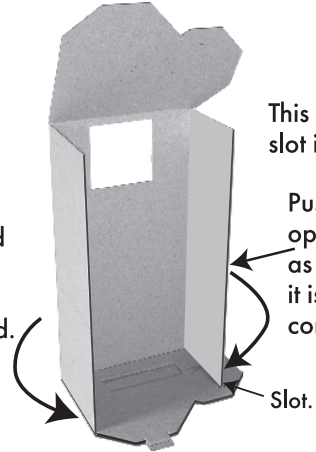
Fold the side walls around and fit to the base.

This side fits into the recess.

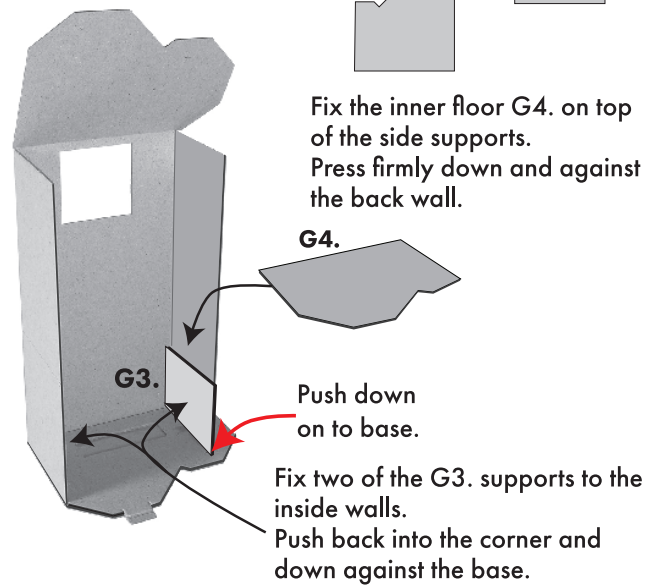
Sit on top of the lower base card and up against the side of the upper base card.

This side fits into the slot in the base card.

Push towards the opposite side wall as the glue sets so it is aligned correctly in the slot.

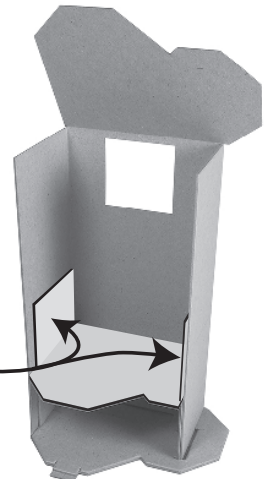


Now extract the six inner floor supports **G3.** and the three inner floors **G4.**



Now repeat in exactly the same way with the next two inner floors. Make sure all floors line up with the base.

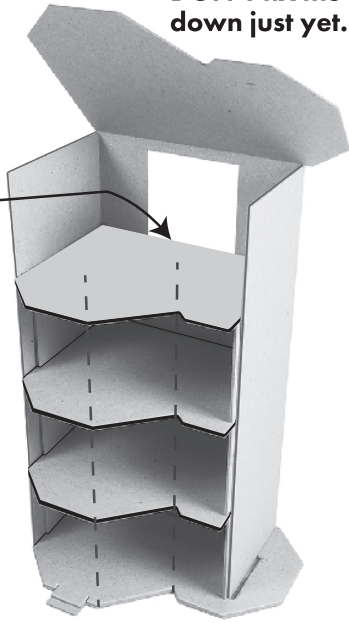
G3. Fixed to either side push down to floor below, then fit another floor on top and so on.



Each floor pushed tight back against the rear wall, so the whole structure is at perfect right angles on every corner.

DON'T fix the top down just yet.

The top floor should be no more than 2mm. higher than the bottom edge of this hole in the back wall.

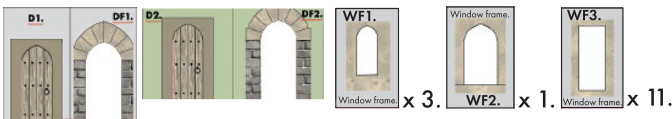


Now put the whole structure to one side.

8 Main House Outer Walls.

From SHEET A. Extract the Main House Outer Walls.

Then extract all the windows and doors as shown below:



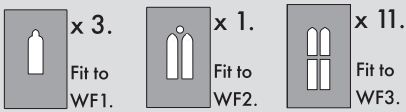
Also DS1. & Jig.



Leave everything else on the base sheet for later.

LASER SHEET L1.

Extract the following:

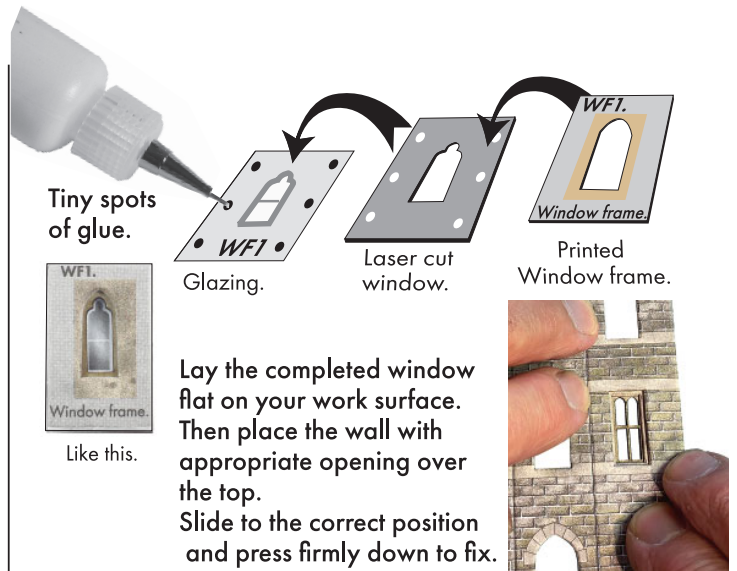
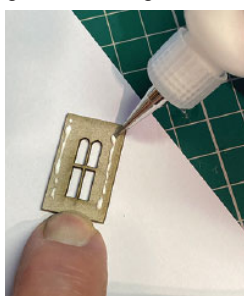


Before you do anything with the house outer walls, you need to make up all the windows and doors and then fix all the windows to the appropriate openings in the house walls and also fit the lower front door.

Make up the windows first.

Sort out the appropriate glazing for each window. Next column shows you the order you glue them together. Lay them on a flat surface, hold each piece on bottom edge as shown and place only tiny amounts of glue away from the window openings.

The laser windows look best if the burnt edge is facing through openings.



Like this.

Lay the completed window flat on your work surface. Then place the wall with appropriate opening over the top. Slide to the correct position and press firmly down to fix.



FRONT DOOR D1.

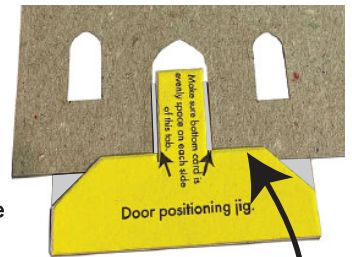
Fit door D1. to the back of door frame DF1.



Jig.

The door fits to the lower door opening on the house wall. It needs to be fitted slightly higher to allow the door steps to fit underneath. Hence the jig.

Fold the door positioning jig in half and glue.

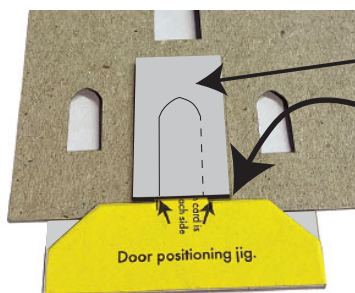


Lay the main house wall face down on a flat surface.

The jig fits as shown yellow side up.

The lower layer of the jig fits into the doorway and up against the base of the wall.

The yellow layer overlaps along this edge.



Place the door face down over the jig.

Slide door down against the jig.

Fix with tiny spots of glue along the edge of the door frame.

Turn back over and this is what it should look like, with the door positioned ready for the door step to fit underneath.



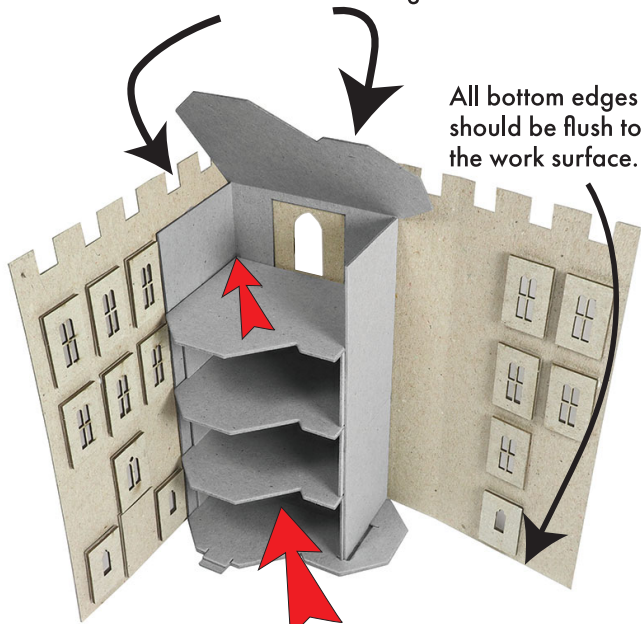
Check you have all the windows fitted.

NOTE: there is a door opening high up in the wall. Leave this open.

9 Fit walls to inner frame.

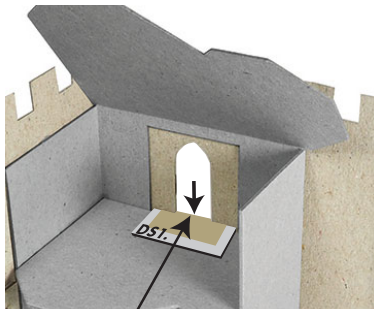
Fix the rear wall and the left hand side wall to the back and side of the inner frame.

Stand on a flat surface as you fix them around and against the frame.



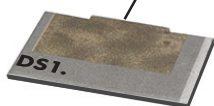
All bottom edges should be flush to the work surface.

Push and hold inner frame tight into the corner - top and bottom.



IMPORTANT! Before you go any further. The door opening in the top of the building needs the door step and door.

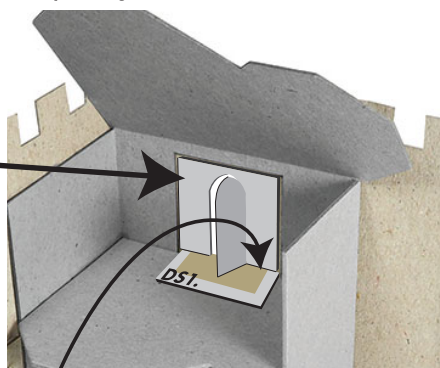
Start with the door step DS1.



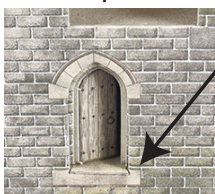
Fix onto the inner floor with the protruding tab slotted into the door opening.



Fix door D2. to the back of door frame DF2. then fix to the opening.



As you fit the door to the back of the wall, push downwards so that it pushed the doorstep down onto the threshold.



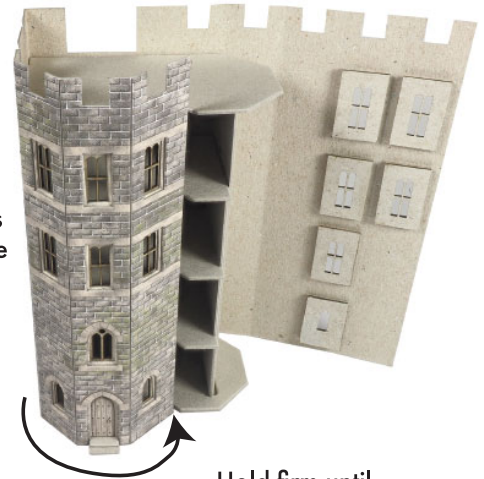
Like this.

Fold the roof down and fix to inner wall tops.

Place spots of glue on the edges of the floors that the left hand three wall sections touch when folded around.

Test without glue first so you can see where they are.

Also note the door step, which needs a little juggling to get the doorway to fit around it.



Hold firm until the glue sets.



Now the four right hand wall sections fold around. Test without glue first as before, then put spots of glue on the edges that touch the wall.

Also a little glue down the inside edge of the wall end where it fits over the left hand wall where they meet.

Hold firm until the glue sets.

Finally, drop in the printed roof top.

10 The Battlements.

This is where things get fussy. Read on with care.

Extract the remaining components from SHEET A. which are:

1 x Roof top for main house.

Battlement walls and spacers as shown below.

Single battlement inner walls W1. There are 7 of each			
Small battlement inner wall W2. There is 1 of each			
Double battlement wall W3. Just 1 each of these.			
Small battlement inner wall W4. 1 of each			

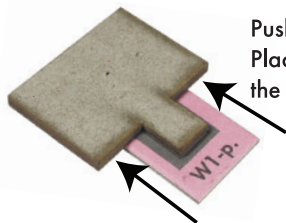
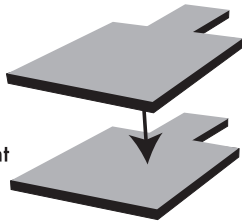
W10. No spacers on this wall.

Each battlement wall has two matching spacers, one pink one blue. Using the jig located on the laser sheet to align them correctly, glue together to form a thick wall that is then attached to the back of the corresponding outer wall.

Make the Jig.

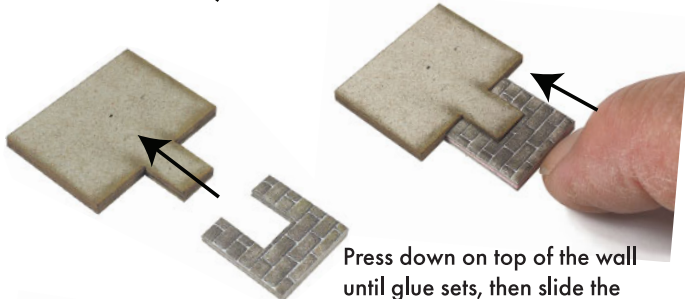
Extract the two identical battlement jigs from the laser card L1.

Glue them together so that ALL edges are **ABSOLUTELY FLUSH**, this is important as this tool will help to align the layers of each battlement wall as you make them.



Push a **PINK** spacer onto the lug of the jig. Place tiny spots of glue on the surface of the spacer

Place the **PRINTED** wall section on top of the pink spacer and push both tight up against the jig.



Press down on top of the wall until glue sets, then slide the jig away from the wall.



Now take a **BLUE** spacer and place it on the jig, as you did with the pink. Then place the stone wall with the pink spacer attached on top of the blue spacer. Push all layers up tight against the jig. When fast slide out the whole wall unit.

Like this.

With all inner edges perfectly aligned. Make up walls W3. & W4. in same way.

Fit the roof card before you attach any battlements

Aligning the crenels.

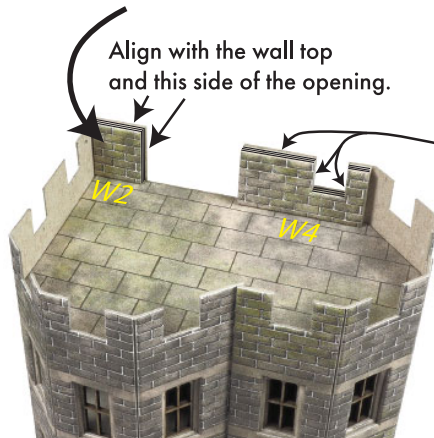
When fitting the inner walls to the battlements, always fit them just a little higher than the outer wall.

Then quickly before the glue dries slide them down using the point of your tweezers until they are level with the wall tops.

Slide your tweezers from side to side in the crenels as well to align the sides.

The inner walls can be slightly shorter than the outer walls. Always line them up along the top edge.

Fit inner wall W2. first.



Align with the wall top and this side of the opening.

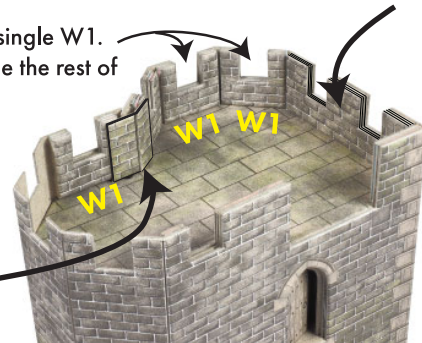
Next fit wall W4. Align with wall tops and the inner edges of the crenel.

If in doubt look at the plan (6 page 2.).

Next fit inner wall W3.

Then fit the 7 x single W1. inner walls to the rest of the battlements.

W10. fits over the gap between these two W1 walls.



Now put the building to one side whilst you build the turret.

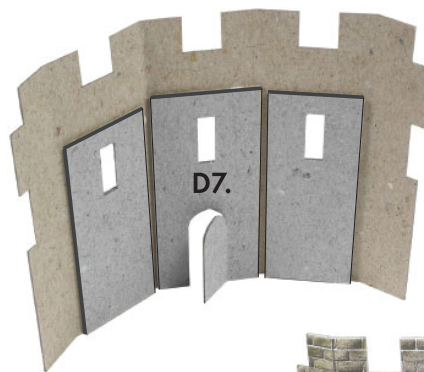
The Turret.

This little tower sits on top of the main building fitted into the gap in the back wall.

We go to **SHEET C** now and extract the following:

- 1 x Turret outer walls.
- 1 x Turret roof top.
- 1 x Turret door D7.
- 1 x Turret back inner joiner.
- 2 x Turret inner side walls.
- 2 x Pink NTW1. and 2 x blue NTW2. Turret top inner walls

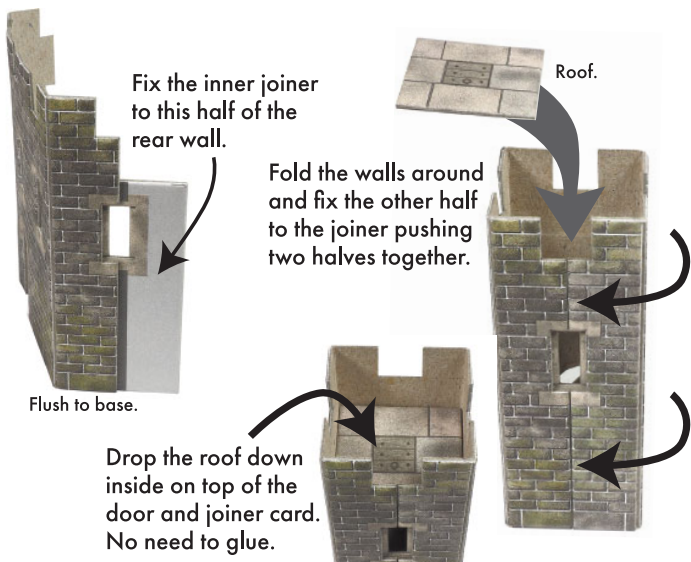
10 items in total.



Fit door D7. and the two inner side walls. All should be flush along the bottom edges and window openings should line up, like this.

Fix the glazing to the back of the window openings. There are no laser cut window frames for this turret.





Fix the inner joiner to this half of the rear wall.

Fold the walls around and fix the other half to the joiner pushing two halves together.

Flush to base.

Drop the roof down inside on top of the door and joiner card. No need to glue.

Fold and glue in half the four inner top walls.

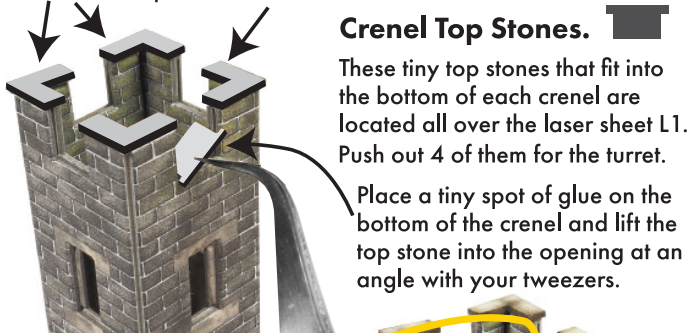


Fit them inside the turret battlements in the same way as you did with the main house walls.

Fit the **BLUE WIDE** walls first opposite each other.

Then fit the **PINK NARROW** walls at either side.

Carefully push out the four 'L' shaped top stones from laser sheet L1. and fit to the wall tops on each corner.



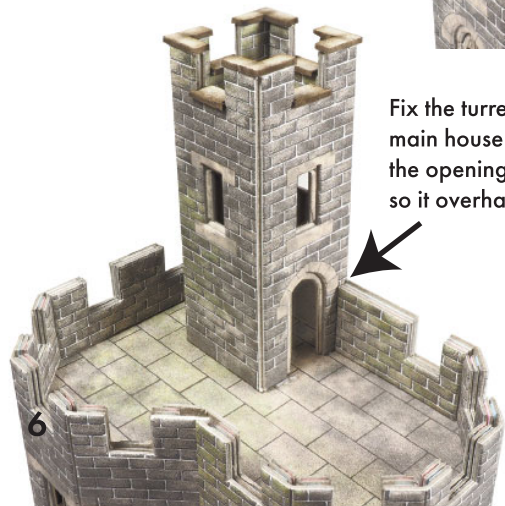
Crenel Top Stones.

These tiny top stones that fit into the bottom of each crenel are located all over the laser sheet L1. Push out 4 of them for the turret.

Place a tiny spot of glue on the bottom of the crenel and lift the top stone into the opening at an angle with your tweezers.

Then with the end of your tweezers push the top stone down level and into place.

All Crenel Top Stones fit this way throughout the rest of this kit.



Fix the turret to the top of the main house, sitting slightly over the opening in the back wall. so it overhangs by about 1mm.

Place the building to one side, we now go on to the East Wing.

12 The East Wing.

If you look at the plan, you can see that the East Wing wraps around part of the main house. This is built separately and then attached when finished.

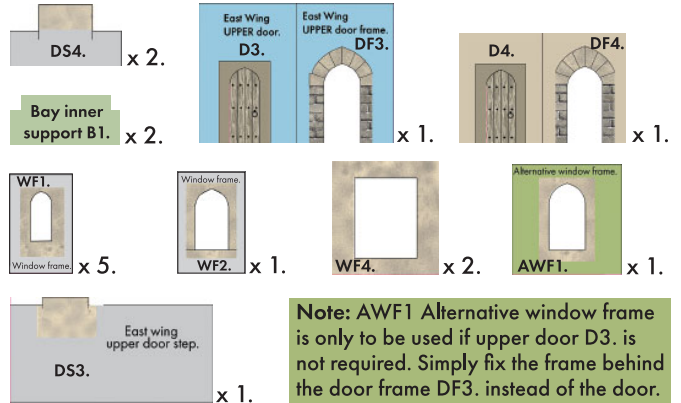
From the Grey Card Sheets D & E. extract the following:

- 3 x G5. Base cards
- 6 x G6. Bay inner strips.
- 1 x G7. Roof base card.
- 1 x G8. Wall end strengthener

From **SHEET B**. Extract the **East Wing Outer Walls**.

The **East Wing front bay walls** and the **North Wing walls**.

Then extract the doors, window frames etc. as shown below:



Note: AWF1 Alternative window frame is only to be used if upper door D3. is not required. Simply fix the frame behind the door frame DF3. instead of the door.

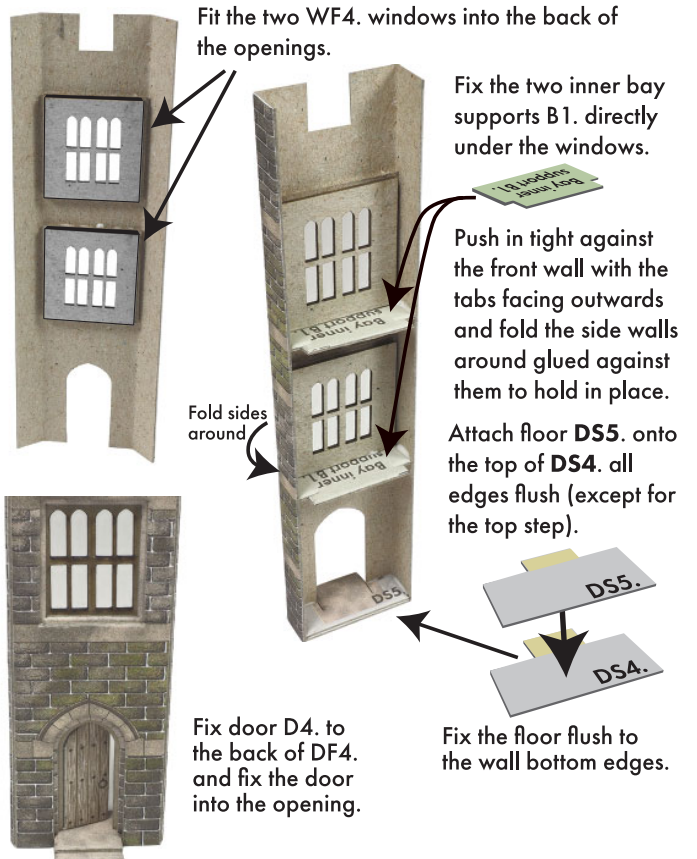
LASER SHEET L1.

Extract the following:



Make up the windows with their glazing and matching frames etc. as described on pages 2-3.

Bay Windows.



Fit the two WF4. windows into the back of the openings.

Fix the two inner bay supports B1. directly under the windows.

Push in tight against the front wall with the tabs facing outwards and fold the side walls around glued against them to hold in place.

Attach floor DS5. onto the top of DS4. all edges flush (except for the top step).

Fold sides around

Fix door D4. to the back of DF4. and fix the door into the opening.

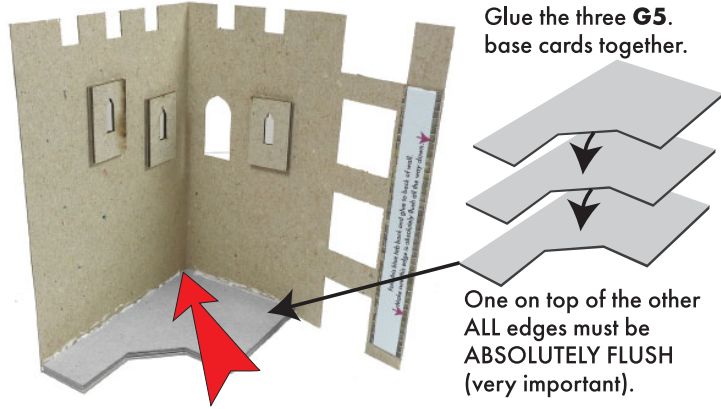
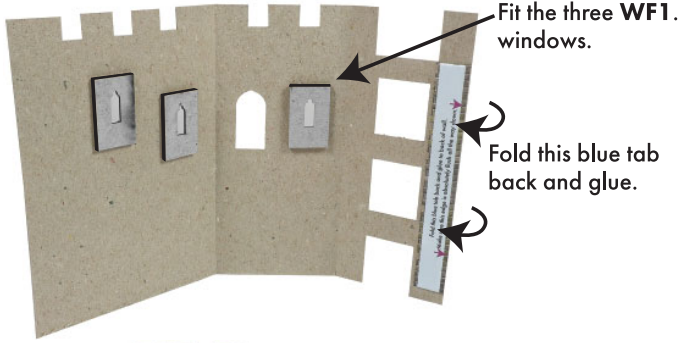
Fix the floor flush to the wall bottom edges.

Finally fix the six small Bay Inner Strips **G6**. to the inner side walls. These just make the wall thicker when gluing it to the East wing. These are best fitted with the bay laid down on its side.



No higher than the top of this window.

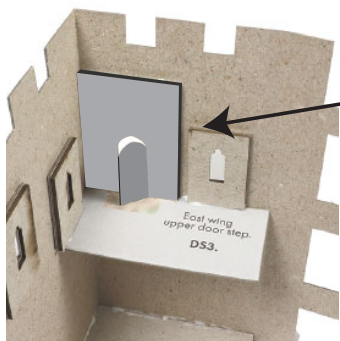
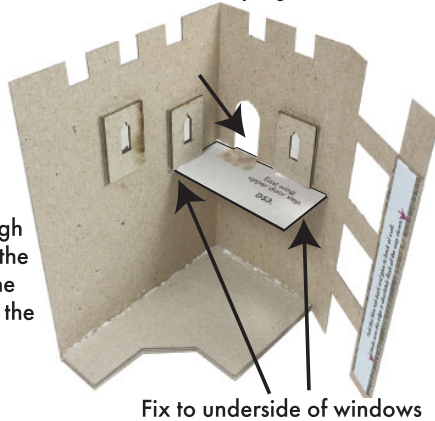
East Wing Main Walls.



Fix the rear and side walls to the edge of the base as shown. Push tight into the corner. Hold both walls firmly against the base until the glue has set.

Fit the upper door step DS3.

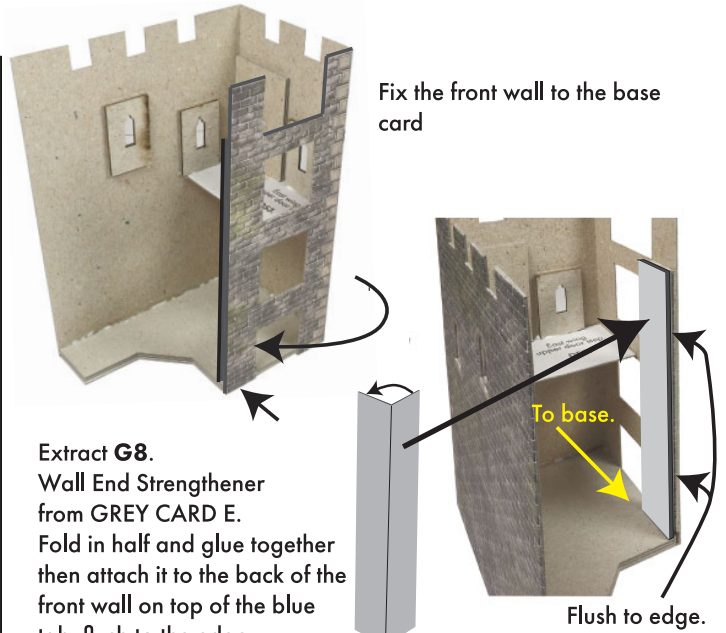
The door step sits through the door opening onto the threshold. The rest of the card fits up underneath the two windows.



Fit door D3. to back of door frame DF3. then fix into the corner.

This upper door is designed for access to the curtain walls. Our kit code PO293.

If not using curtain walls, then attach the alternative window. NOTE: to cover green area on window bottom, use spare stone on page 12.



Extract **G8**. Wall End Strengthener from **GREY CARD E**. Fold in half and glue together then attach it to the back of the front wall on top of the blue tab, flush to the edge and standing firmly down on the base card. The top edge should line up with the top of the blue tab, as this is one of the supports for the roof and should not be any higher.

The other roof support is blue card **J1**. located on **SHEET C**.

Fold in half and glue, then attach to back of rear wall. standing firmly down on base. It needs to protrude past the wall end by 2mm. (the black line will guide you)



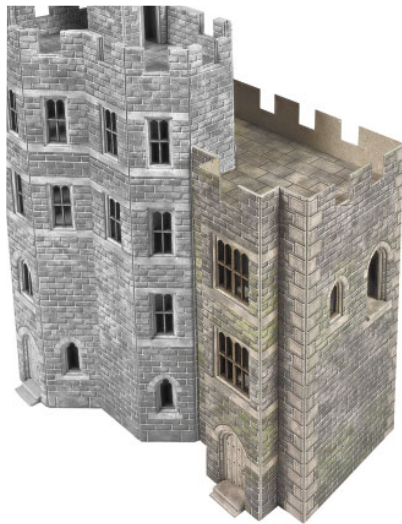
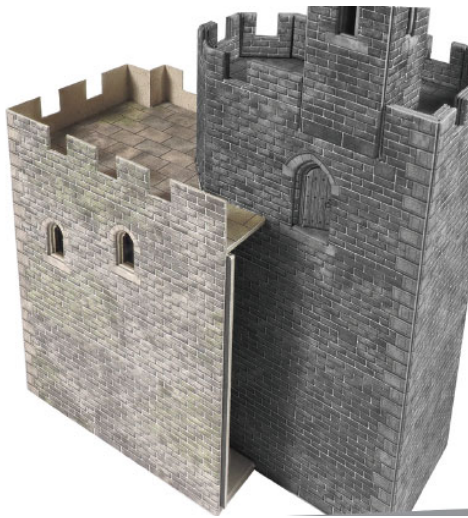
The grey **G7**. Roof base card fits first into the building sitting on top of the roof supports.



Make sure the grey roof base is seated properly on all supports and the outer walls are fitting up against it. Then fit the printed roof directly on top.

The East Wing now fits to the side of the Main House.

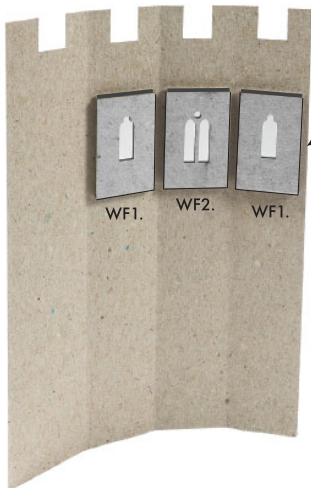
Fix with glue placed along all edges that fit to the building



Test first without glue so that you can see where it fits.

Hold firmly together until the glue has set.

13 The North Wing.

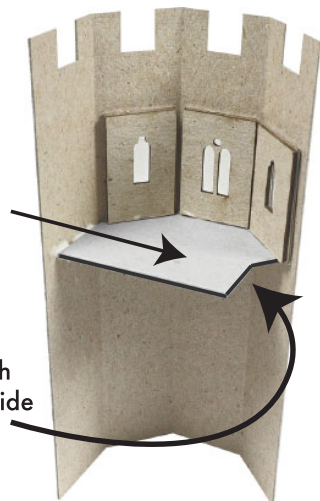


The three windows you have left, that you made up earlier, fit to the openings in the North Wing

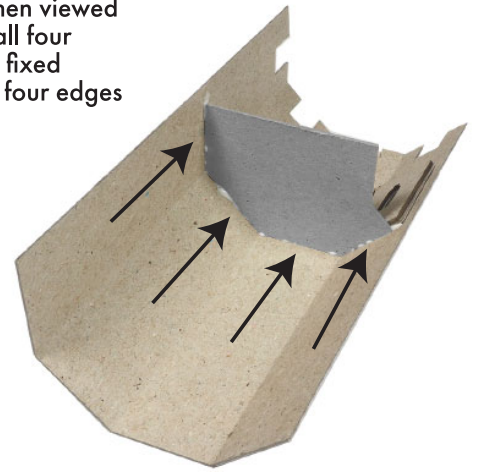
Grey card Inner mid floor

G10.

Fix the inner floor directly underneath the windows with the cut away section to this side

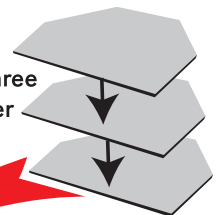


Make sure that when viewed from underneath all four wall segments are fixed tightly against the four edges of the mid floor.



North Wing Base

G9. Glue three together



There are 4 x G9. Grey cards. glue THREE of them together All edges Flush.

Fit into the base of the building with the walls fixed on four of the edges as shown.

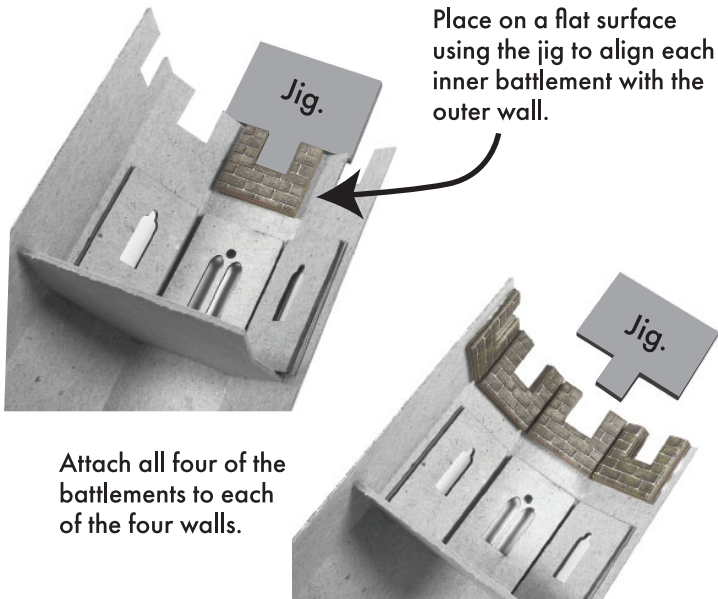
East & North Wing Battlements.

Extract all remaining components from SHEET B. There are:

Single battlement inner walls W1. There are 4 of each			
Folding battlement inner walls W5.& W6. These fit around the walls just above the dormer. W5. is slightly wider than W6. Keep together.			
Single battlement W7. There are 1 of each Don't mix with W1. they are slightly narrower			
	Long wall W9. As well as the pink and blue spacers to match		

There are also five components for the Garderobe. Put these to one side.

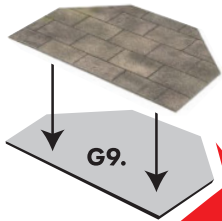
Start with the North Wing battlements.
 Make up the four sets of single **W1**. battlements as described on page 4.
 These now fit to the wall top before you fit the roof.



Place on a flat surface using the jig to align each inner battlement with the outer wall.

Attach all four of the battlements to each of the four walls.

Attach the printed North Wing roof on to the top of the remaining grey card **G9**.

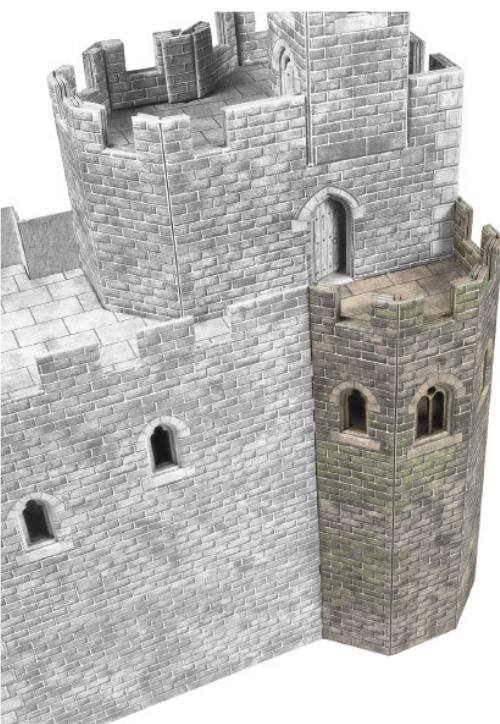


Then fix up underneath the battlement walls. Make sure the four outer walls are all in contact with the four corresponding edges of the floor.



Note this side wall is slightly longer down this side. This section overlaps on to the main building when you fix.

Fix the North Wing to the main building. Test without glue first so you see which edges need spots of glue to hold it in place.

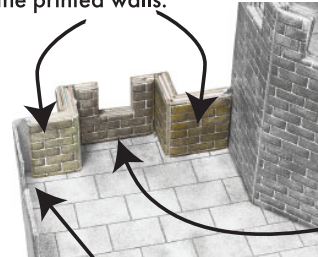


East Wing Battlements.

W5. blue spacer first. Fold and fix to dormer and front wall.

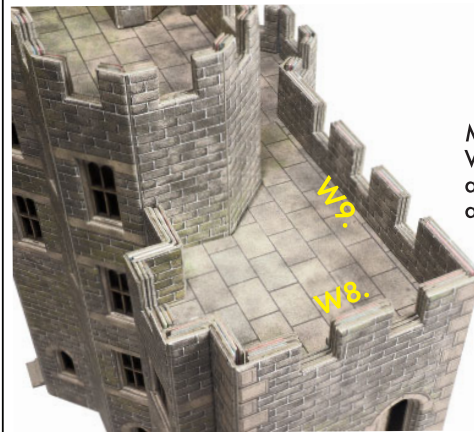
W6. blue spacer this side

Then attach the **W5**. & **W6**. pink spacers followed by the printed walls.



Make up **W7**. with its green and yellow spacer and drop in here.

Note the small gap here for wall for **W8**. to slot in.



Make up walls **W8**. and **W9**. and fix to the end and rear walls.

You should now be in a position to admire your wonderful work of art.

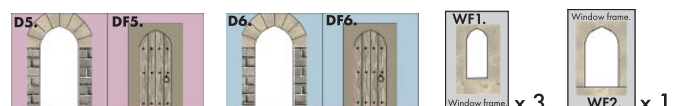
But you are not finished yet, so put the building to one side and on to the next section.

14 The West Wing.

Extract all remaining components from SHEET C. There are: West Wing outer walls.

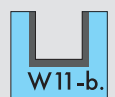
Base cards **BC1**. & **BC2**. 1st. Floor card and the Roof.

Plus these smaller items:

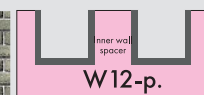


Window frame x 3. WF2. x 1.

Single battlement inner walls **W11**. There are 2 of each



1 each



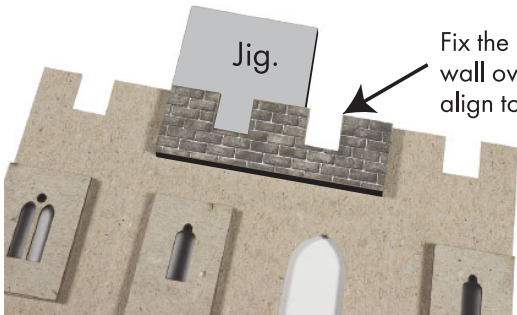


As usual start with the windows. Make up the last three WF1. and the WF2. windows and fix to the openings.

As with the North Wing you need to attach the battlement inner walls to the wall tops before the building is made up.

Make up your battlements W11. and W12. with their pink and blue spacers.

Place outer walls face down on a flat surface, insert the jig into the inner part of the battlement (crenel)

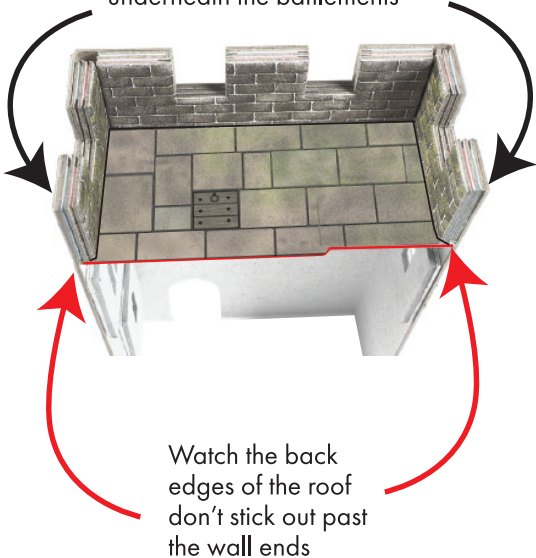


Fix the battlement inner wall over the jig and align top edges.



Repeat with the other W11. battlements

Fold the walls around and fix the roof up underneath the battlements

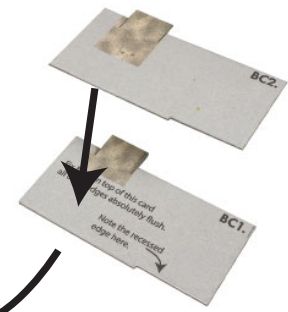


Watch the back edges of the roof don't stick out past the wall ends

Note the recessed section cut away on the back edge



Take floors BC1. & BC2. Fix BC2. on top of the other all edges flush.

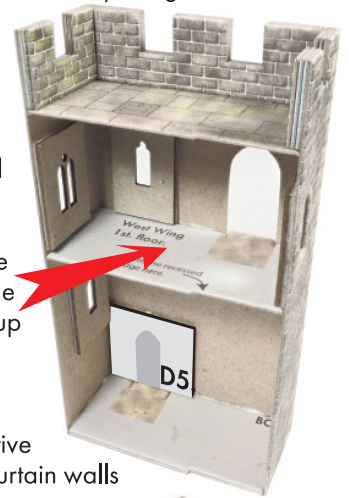


Then fit into the base of the building with the door step pushed through the door opening.

Fit tight into the building so the back edges don't stick out past the edges of the walls.

Fix the door D5. and frame DF5. together and fit behind the door opening.

Next fit the 1st. floor with the door step pushed through the door opening. Fit the floor up and under the windows. Take care back edges don't stick out past wall edges. Then fit Door D6. or alternative window frame if not using curtain walls

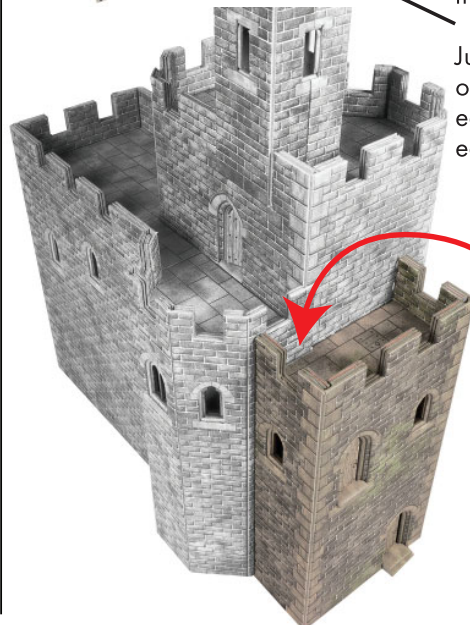


To strengthen the side walls and make fixing the West Wing to the main building easier.

Just add a few layers of waste card down each side, flush to wall edges.

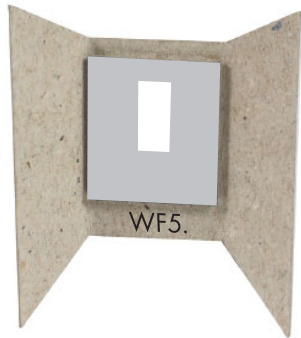
Now fix to the main building.

Note that the small recess in the back of the West Wing is to enable it to fit around the outer wall of the North Wing where it overlaps the main building.



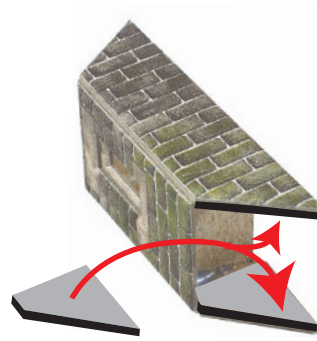
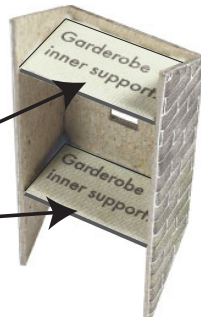
15 The Garderobe.

The Garderobe always gets a smile! Something that could be painful if used during a siege. This small overhanging toilet uses up the last five components from sheet B.



Fix the glazing to the window frame WF5, and then fit to the small window opening.

Fold the side walls around and fix them in place with the two inner supports, which are attached to the top and bottom edges of the window.



The two tiny triangular garderobe brackets on the Laser sheet, fix to the lower inside edges of the walls.


Fix the garderobe to the rear wall of the East Wing near the top.

When fast, fit the roof.



16 The Capping Stones.

The various capping stones are the final bits that make this castle look really good. Follow the instructions carefully and you won't get lost.

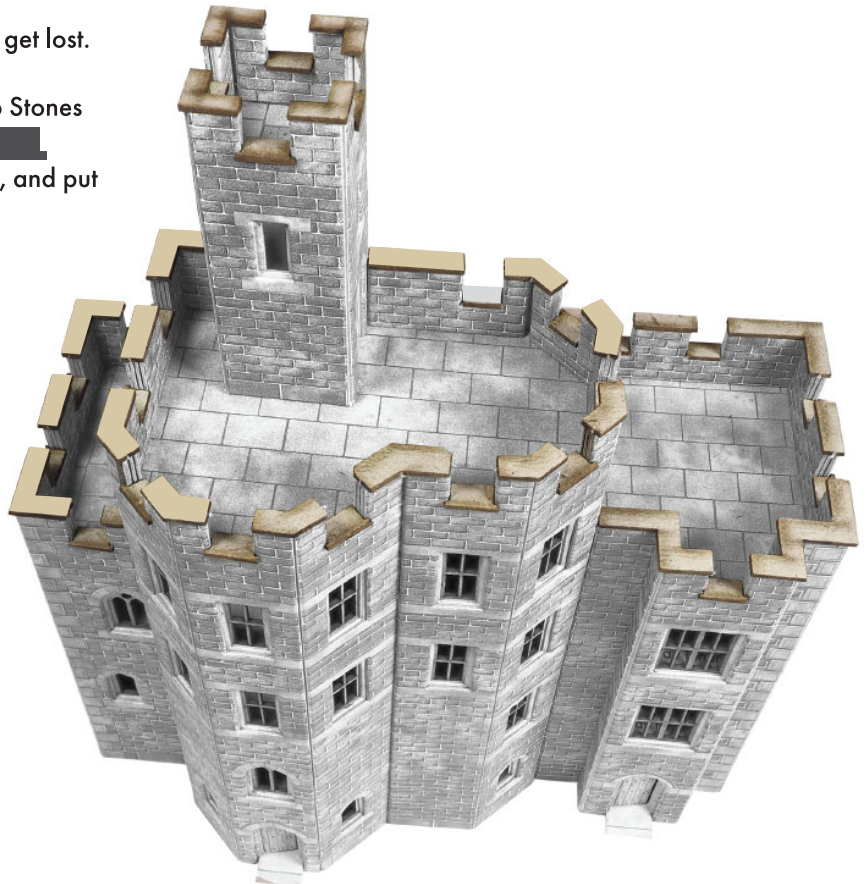
Carefully push out all the remaining Crenel Top Stones. These are the small ones all shaped like this-  Use the point of your tweezers to pop them out, and put them all together away from your work area.

Leave all the other top stones in the base card. They are laid out to the plan of the castle and should only be extracted out one at a time as you come to fit them.

Fit all the Crenel stones first in the same way as described on page 6.

Then work your way around the Merlon top stones. It is self apparent where they fit.

NOTE: We find that Rocket Card Glue is the best glue for fitting these tiny components.



Added to our other Castle Kits, you can create all kinds of interesting scenes.



A small fortified house like this is made using the Castle Hall, with two 45° Curtain Wall corners and two Watch Towers on each end. Great for fitting in a corner of your layout. Overall size 38cm. x 12cm.

Other kits in the Castles range.



PO291
Castle Gatehouse

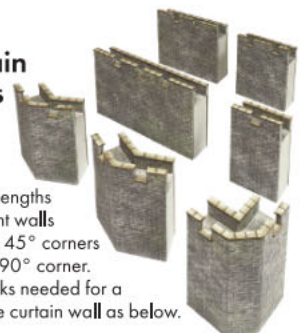


PO292
Watch Tower

A useful little tower to fit in with the curtain walls

Or even a stand alone folly

Curtain Walls



Various lengths of straight walls plus 2 x 45° corners and 1 x 90° corner. Two packs needed for a complete curtain wall as below.



Alternative Window.

As mentioned on page 7, if you are using the alternative window instead of the door, it should look like this. However, on this kit the small area just under the window shows green card.

To cover it, simply patch a little stonework cut from this spare stonework to cover it over..

